



Landcruising Puma 1 (Release 2012)



The Puma is our dedicated jumpline webbing anchor for the professionals. We set the focus on a super sturdy approach with direct shackle interface and a lightweight and powerful design.

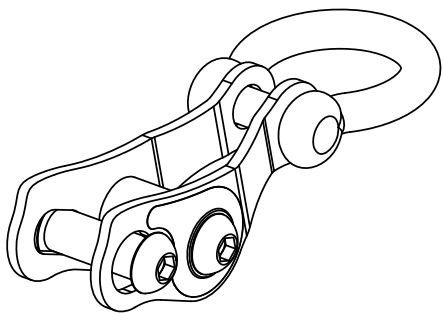
Thanks to the high breaking strength of nearly 6 tons it is possible to rig and work out high tension lines with a sufficient safety margin. The big diameter of the main roller ensures a high efficiency of the webbing strength, specially for polyamide lines. The quick locking pin enables the fast setup and remove of the line. Precise rigging due to the possibility of hand adjustment before tightening is a standard task for the Puma.

- very compact and optimized design for slacklines of 30-32mm width (suitable for very thick lines, e.g. threaded tubular)
- quick lock frontpin with Ø15mm, made of galvanized steel
- **main roller with Ø24mm**, made of eloxated aircraft aluminium 7075
- 4mm thick side plates of stainless steel, bended, grinded and powder coated
- oval head screws M12 made of steel 10.9 hardened
- direct interface to shackles with up to 15mm bolt diameter
- total weight of solo option is 380 grams
- **use up to 14 kN working load limit**
- tested break strength of Matrix webbing = 43,5 kN
- tested break strength of metal body structure > 59 kN
- **no usage with Dyneema and Dyneema hybride webbings!**
- Design by Landcruising, Made in Saxony



Manual

for
Puma 32
Slackline Anchor



Rev. 1.0



! Caution !

Activities under the use of the Puma are potentially dangerous.

You are responsible for your own actions and decisions.

Note the following before you use the Puma:

- Read this manual completely
- Get familiar with the behaviour and limitations of the Puma
- Step up carefully to higher pretensions and longer slackline lengths
- Understand the risks involved in the use of the Puma, especially while high tensioned tricklining

! Load Limit (WLL) !

The Puma should be used up to a maximum pretension of 14 kN

Breaking Strength of Puma metal body > 59 kN
Effective webbing breaking strength depends on type of webbing (e.g. new Matrix - 43,5 kN)

1. Intended use

The Landcruising Puma 32 is a slackline anchor for webbings of 30 to 32 mm in width and max. 4 mm in thickness. Any other use is prohibited.

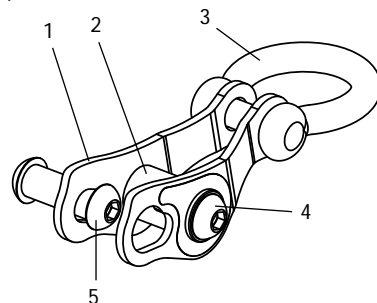
No use of Dyneema, Dyneema-Hybrid and rubber-printed webbings with the Puma danger of slipping and pin failure beyond 8kN!!

The Puma may not be used in the setup of highlines. The maximum height of a slackline anchored with the Puma is 2 meter.

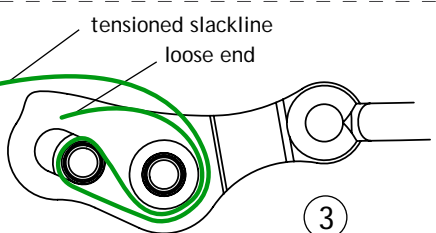
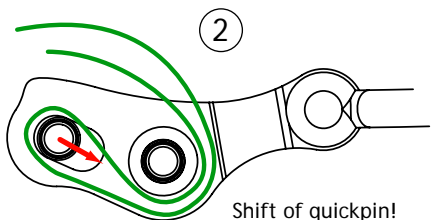
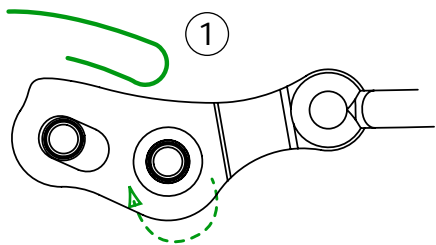
The maximum tension in the slackline of 14 kN may not exceeded during setup and slacklining. The user is responsible for the control of the tension (simple middle sag - check as minimum)
The use of the Puma and the thread of the webbing strictly following the method described in section 3 of this manual. Other webbing threading methods are prohibited.

2. Naming of parts

1. sideplate, 2. main roller, 3. shackle (alternative pulley bolt), 4. screw bolt, 5. quick release bolt



3. Threading the webbing

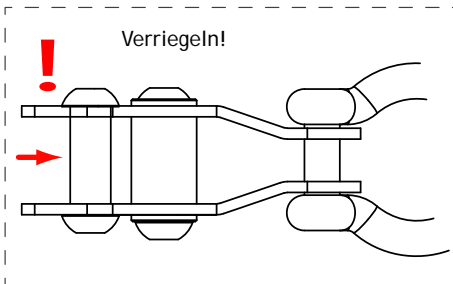
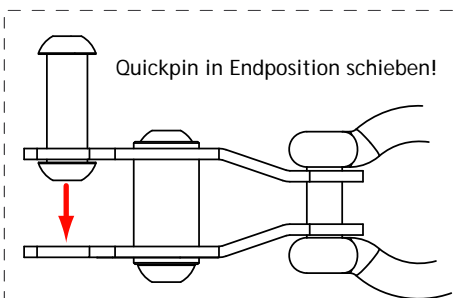


Pretightening - after locking the Quickpin, the loose webbing end can be pulled by hand while feeding the slackline with the other hand.

Take care of the proper centering of the line!

4. Locking the Quickpin

The Quickpin must be securely locked after threading the slackline and before tightening!



5. Note on setup options

The Puma is delivered in 2 assembly options:

1. Variant with direct assembly to shackles be aware of secure closure of the shackle pin
2. Pulley variant with rear bolt the pulley is centered between 2 O-rings fasten the nut with 20 Nm.

6. Storage and removal

The Puma needs dry storage - all parts are made of corrosion resistant materials.

The screws are threaded with thread adhesive.

The unscrewing of the bolts is prohibited.

Tighten the rear bolt to 20 Nm while assembling the Puma to a double pulley. Don't forget placing of centering O-rings.

Caution! - loose screw or over tightening of the screw is prohibited

7. Disclaimer

Warranty:
The legal warranty is valid. Excluded are normal wear/tear, modifications/changes and damages caused by improper use.

We, as manufacturer and seller, are not responsible for injuries, consequential or/and incidental damages resulting from the use of the Puma.

You assume full responsibility to all risks and property damage, personal injury or death which may arise in combination with improper use of the Puma.

If you want not take this responsibility and risk, or if you not allowed to take full responsibility - don't use this product.